

8

7

6

5

4

3

2

1

4 11/32 [110.0]

4 3/8 [111.0]

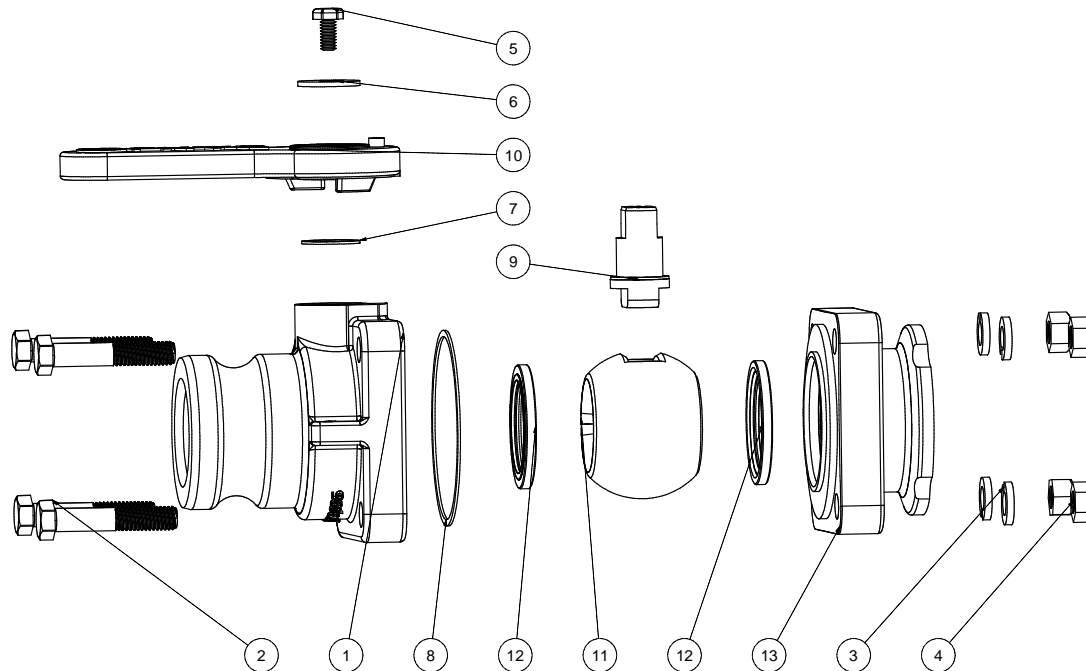
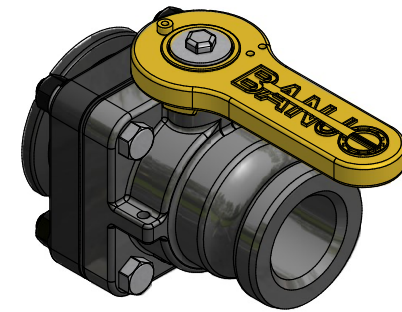
1 1/2 [38.1]

3 9/16 [90.4]

5 [126.9]

Parts List

ITEM	QTY	PART NUMBER	DESCRIPTION
1	1	VF20254	2" F STUBBY BODY, MACHINED
2	4	V20010SS	3/8-16 X 2" HHCS
3	4	V20018	3/8" LOCKWASHER
4	4	V20019	3/8" HEX NUT
5	1	V20020	2" handle Bolt
6	1	V20021	Handle Washer
7	1	V20060	VALVE STEM THRUST BEARING
8	1	V21204	TFE E/P BODY GASKET
9	1	VS20151	VALVE STEM W/ BEARING
10	1	VS20152SH	2" STUBBY HANDLE
11	1	VS20255	2" VALVE BALL
12	2	VS20258A	BALL SEAT
13	1	VS20294	TANK FLANGE ENDPLATE



THIS DRAWING AND ALL
INFORMATION CONTAINED THEREON
ARE THE EXCLUSIVE PROPERTY OF
BANJO CORPORATION.

UNLESS SPECIFICALLY NOTED, THIS
DRAWING AND ITEMS SHOWN ON
THIS DRAWING ARE SUBJECT TO
CHANGE AT ANY TIME.



BANJO CORPORATION
150 BANJO DRIVE, CRAWFORDSVILLE, IN 47933
WEB SITE: WWW.BANJOCORP.COM
E-MAIL: SALES1@BANJOCORP.COM

DESCRIPTION
2" MALE ADAPTER X MNFLD STUBBY
VALVE

PART NUMBER
VSF200CF

8

7

6

5

4

3

2

1